

## Which hearing aid is right for you?

Within a hearing aid advice appointment, information will be provided on the different range of hearing aids and the individual features.



## Receiver In Canal (RIC)

Small, discreet and quick to fit. Perfect for first-time hearing aid wearers.

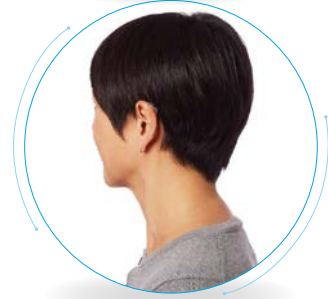


### Advantages

- ✓ Typically smaller & more discreet than a BTE
- ✓ Can fit “open,” more natural sound quality
- ✓ Rechargeable available
- ✓ Direct connectivity to Bluetooth devices

### To consider

- Quick to fit (can take home the same day)
- Speaker susceptible to earwax and clogging



## Behind-The-Ear (BTE)

Provides the most amplification, making them the preferred solution for people with severe-to-profound hearing loss.

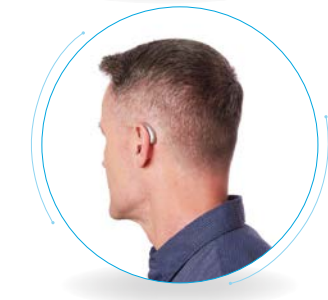
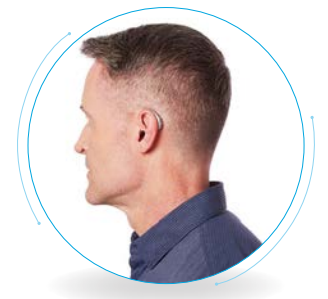


### Advantages

- ✓ Comfortable since it doesn't sit deep in your ear
- ✓ Available with thin tube or personalised ear mould
- ✓ Despite the size they are barely visible when worn
- ✓ Easy to handle and clean
- ✓ Rechargeable available
- ✓ Direct connectivity to Bluetooth devices

### To consider

- Quick to fit (can take home the same day)
- Available in mini, standard and power



## In-The-Ear (ITE)

Custom hearing aid that fits within the outer portion of the ear. Larger battery provides longer battery life.

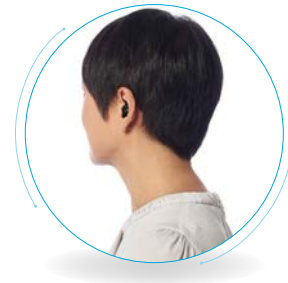
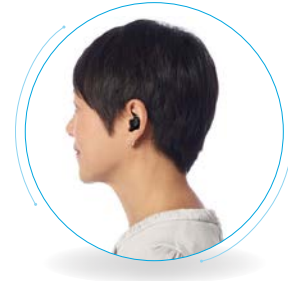


### Advantages

- ✓ Custom fit to your ear
- ✓ Larger battery provides longer battery life
- ✓ Can include controls for volume and memory
- ✓ Rechargeable available
- ✓ Direct connectivity to Bluetooth devices
- ✓ Rechargeable available

### To consider

- Largest of the custom styles
- Can be made full or half shell
- May pick up more wind noise



## Invisible (IIC)

Hearing aids placed inside the ear, custom-made to best fit each client.



### Advantages

- ✓ Rests in the second bend of the ear canal where no one can see them.
- ✓ Custom-fit to your ear
- ✓ The smallest, most discreet hearing aid made
- ✓ Rests deep in the second bend of your ear canal

### To consider

- Small size may be challenging to wearers with dexterity issues
- Small batteries require more frequent changing
- Small size cannot accommodate manual volume or memory controls



## Completely In Canal (CIC)

Only the tiny removal handle of the hearing aid shows outside of the ear canal.

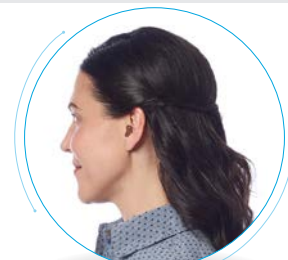


### Advantages

- ✓ Custom fit to your ear
- ✓ Our second smallest custom hearing aid style
- ✓ Less visible than larger custom styles

### To consider

- Small size may be challenging to wearers with dexterity issues
- Small batteries require more frequent changing



## In-The-Canal (ITC)

Custom hearing aid that fits in the ear canal. Smaller portion shows in the outer ear.



### Advantages

- ✓ Custom-fit to your ear
- ✓ Less visible than larger custom styles
- ✓ Can include controls for volume and memory that won't fit on smaller custom hearing aids
- ✓ Direct connectivity to Bluetooth devices

### To consider

- Second largest custom style
- Small size may be challenging to wearers with dexterity issues
- Small batteries require more frequent changing - rechargeable is available in select style

